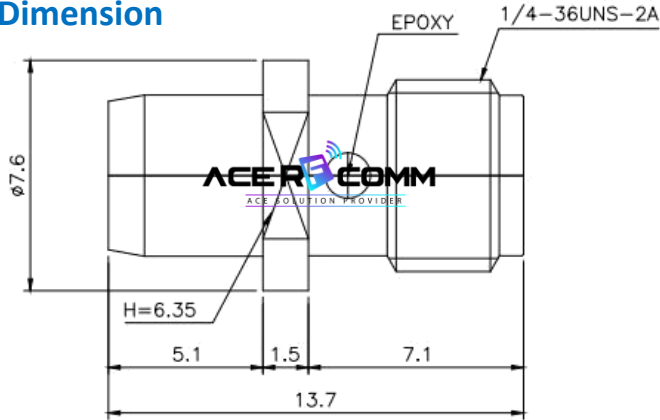


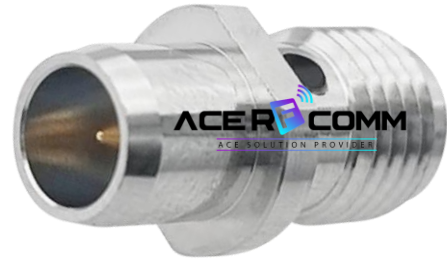
## Adaptor, SMA Female to BMA Male (BMA Plug)

P.N. : X-SMBM.18FM.1

### Dimension



### Photo



### Electrical specification

Frequency Range	DC ~ 18GHz
Impedance	50 Ohm
V.S.W.R.	1.35 :1 Max.

### Material specification

Connector Body	Try-Alloy Plating Brass
Connector Center Contact	Gold Plating Becu
Insulator	PTFE
Connector Mating	500 cycles

### Environmental specification

Voltage rating	500 Vrms
Dielectric withstanding voltage	1500 Vrms
Contact retention	6 lbs axial
Operating Temperature	-50°C ~ 125 °C
RoHS	Compliant

# Adaptor, SMA Female to BMA Male (BMA Plug)

P.N. : X-SMBM.18FM.1

## Test Data

