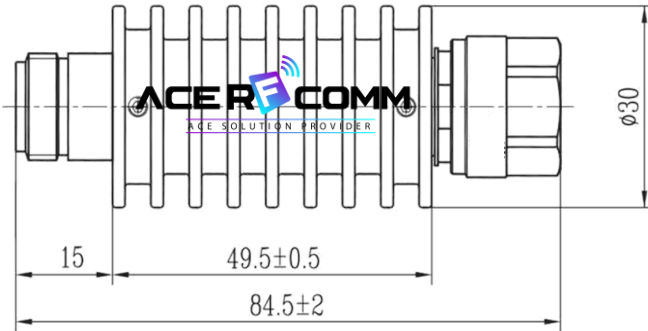


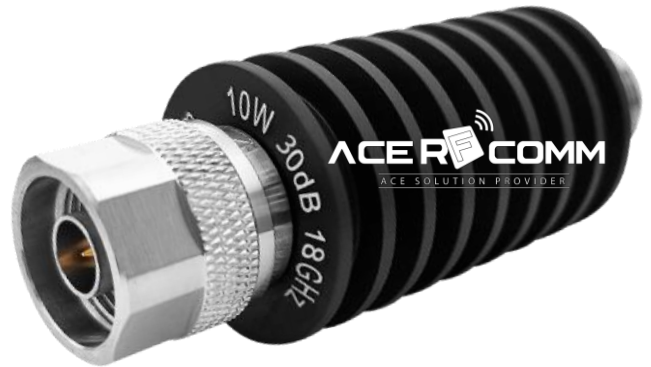
Attenuator, DC~18GHz, N 10Watt 30dB, Bi-directional

P.N. : A-1830.NN10.1

Dimension



Photo



Electrical & Environmental specification

Frequency Range	DC ~ 18GHz
Impedance	50 Ohm
Input Ave Power	10Watt @ 25°C derated linearly to 0 watts @ 125°C
Peak Power	0.5kW (5 µsec pulse width, 1% duty cycle)
Nominal Attenuation	30dB ± 1.1dB
V.S.W.R.	1.45 : 1 Max
Direction	N male input to N female output
Operating Temperature	-55°C ~ 125 °C

Material specification

Connector Body	Tri-Alloy Plating Brass
Connector Center Contact (Male)	Gold Plating Brass
Connector Center Contact (Female)	Gold Plating BeCu
Connector Mating	500 cycles
Housing	Black Anodizing, Aluminum
Weight	110 gram
Dimension	Ø30 * 85mm
RoHS	Complaint

Attenuator, DC~18GHz, N 10Watt 30dB, Bi-directional

P.N. : A-1830.NN10.1

Test Data

